



# Needing to Analyze Stuttering Patterns? Now Utilize Technology Via SALSA

By [nicespeechlady.com](https://nicespeechlady.com) / January 23, 2022

Nice Speech Lady recently conducted a print/written interview with an Israeli SLP, Itamar Guy, who has developed an innovative program for analyzing stuttering information. His software is called the [SALSA speech sample analysis tool](#).

## **"Please tell us about yourself."**

"I served in the Israeli Defense Forces spokesperson, volunteered for 7 years with children with special needs, and worked as a community center director. I'm used to, and prefer to be, behind the scenes. Now I am required to occasionally emerge to the front."

## **"What exactly is the [SALSA speech sample analysis tool](#), in a nutshell, and how will it benefit clinicians and patients?"**

"[SALSA Research](#) produces speech and language assessments for SLPs and researchers from around the world. Most of the assessments currently in use are outdated, provide little information, take a long time to conduct, and were tested by a small sample that does not represent the target population at all. SLPs and their patients deserve more."

The first product I launched is the speech sample analysis tool, which helps assessing stuttering and its characteristics, by using speech samples. This detailed information is extensive, accurate, and easily obtained – so it also saves time."

## **"How did you decide to create the [SALSA speech sample analysis tool](#), and how long has it been on the market?"**

"I myself am an SLP. In my 8.5 years at the academy, I was exposed to outdated content in both courses and seemingly new guidance books that had just been published. It took many years to plan and develop the software, and recently I finally launched it – initially for leading researchers and now also for clinical use by any SLP."

## **"What books, resources or processes have influenced you the most and why?"**

"In my academic studies, only one lesson from an annual course on stuttering and fluency disorders dealt with diagnosis, and even in that – the reference was to gathering information through non-measurable questionnaires. The diagnostic process was also absent from most of the professional literature in the library."



*Nice Speech Lady*

Then I came to the guidebook of Dr, Barry Guitar: *Stuttering – An Integrated Approach to Its Nature and Treatment*. I was shocked to find that even nowadays, the diagnostic process is done by primitive means such as a stopwatch and a calculator. Not only does operating them under time pressure inevitably cause inaccuracies and errors, but the information collected in this way is very superficial, as is the information provided to the subject and his/her parents. They spend a lot of time and money for a comprehensive assessment, and then, after a tedious and torturous process, the certified professional sums it up laconically: your child has a stutter. Big surprise.”

**“What sort of support have you had in the process?”**

“Good people from all over the world have come together to support this important purpose, mainly so that the software will support more languages and help more audiences.”

**“What are positive to choosing to utilize your stuttering analysis tool? What populations are best served by utilizing the [SALSA speech sample analysis tool](#)?”**

“Those who use my stuttering assessment tool can get a lot more information, in less time, effort and mistakes.”

**“What is something most people do not know about the [SALSA speech sample analysis tool](#) or analyzing fluency in general?”**

“SLPs taking their first steps fear that they do not have enough knowledge to assess disfluency. Fortunately, the assessment I developed is very intuitive, and there are even mouse-over options that provide the SLP with explanations and examples.”

**“What has been your greatest surprise along the way?”**

“The warm reactions. Many SLPs ask me to tailor the assessment to their language and are even willing to help.”

**“What has been your biggest struggle in this entire process?”**

The biggest struggle is to reach the target audience, so I thank you for the exposure. If readers are interested, I would love to host webinars for them.”

**“What sort of feedback do you receive from other SLPs?”**

“For many SLPs, a quick glance at their patient is enough to determine whether he/she has disfluency. In contrast, professional SLPs who are committed to the benefit of their patients are not satisfied with the binary decision. They are happy for the opportunity to gather as much relevant information as possible about the characteristics of the disfluency, and are even more happy to discover how easy, fast and cheap it is to do so. They will be able to devote the time saved to other important tasks.”

**“What have you learned the most in pursuing creating a stuttering analysis tool?”**

“I learned about illustrations, legal documents, tutorial videos, programming, marketing, and most importantly – about patience.”



**“What is something that is newsworthy about the [SALSA speech sample analysis tool](#), or any of your related projects?”**

“There is a shortage of SLPs in the world, and SLPs have a shortage of free time. Among other things, the software will save the SLPs a lot of time, which can be dedicated to their families and patients.”

**“What sort of opportunities have come your way because of the development of the [SALSA speech sample analysis tool](#)?”**

“World-wide collaborations. I regularly have Zoom conversations with senior SLPs from countries I have known only from the ‘risk’ game, and with some of which my country has no formal connections.”

**“How can the [SALSA speech sample analysis tool](#) benefit adults vs. children in the analysis?”**

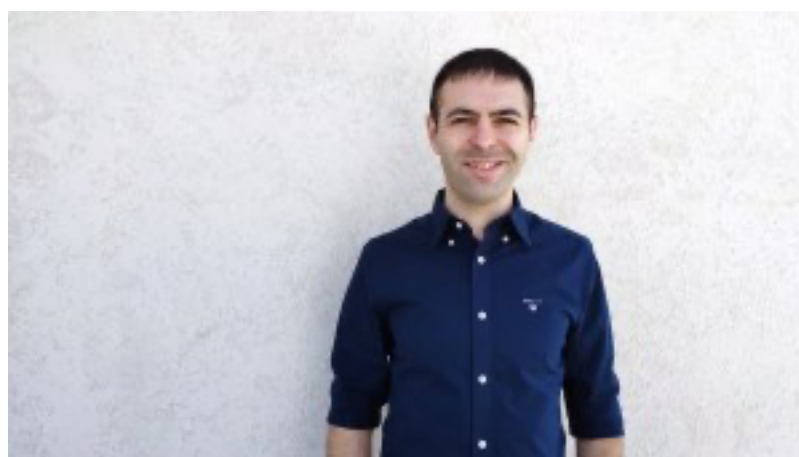
“There is a slight difference whether the patient knows how to read or not, but it does not really matter. The software does not discriminate by age :)”

**“What special features are available with the [SALSA speech sample analysis tool](#)? What are other options out there in terms of stuttering analysis tools and how is the [SALSA speech sample analysis tool](#) an option for clinicians to consider?”**

“The most common software is called CLAN. Unlike it, in my software there is no need to read a 177-page manual and there is no need to transcribe even a single word. It was a great honor to create an assessment that is comprehensive but simple to understand and perform. It examines phonological environments (number of syllables, manner of articulation, voice), secondary behaviors and more.”

**“Why did you choose the name [SALSA](#)?”**

This mystery will become clear over time. Maybe in the next interview.



SLP Itamar Guy, from Israel, created [SALSA Research](#), and is interested in letting SLPs around the world know about it’s time-saving online tool for analyzing stuttering patterns. He can be reached on [Linked In](#).



Wilson Nice, SLP, is the owner of Nice Speech Lady, a platform for medical SLPs to acquire free, useful clinical resources that are evidence-based. She works as a medical SLP in New Mexico, where she works in skilled nursing facilities and provides services through her private telepractice arm with Nice Speech Lady. Nice also interviews experts in the field through print or video – and provides news to SLPs on interesting topics. Check out Nice's [Youtube Channel here.](#)